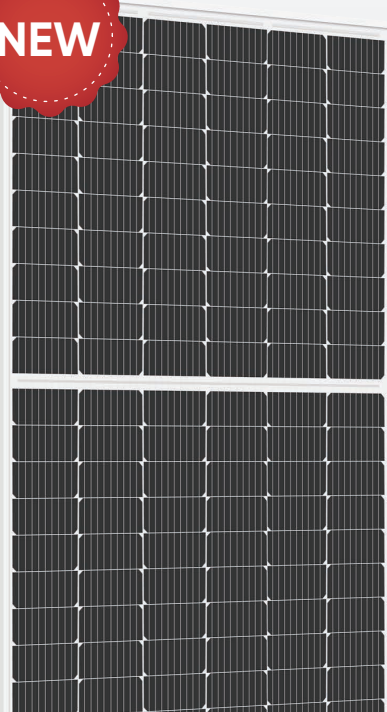


Godzilla



SUNRISE

NEW



Godzilla Series

Large Dimension Plus Half Cell Mono Solar Module

SR-M660HLP
360~375W

SR-M660360HLP
SR-M660365HLP
SR-M660370HLP
SR-M660375HLP

IEC61215/IEC61730

ISO9001:Quality Management System ISO14001:Environmental Management System

ISO45001:Occupational Health and Safety Management System



PID Resistance



Better Low-light Performance



9 Bus Bar Half Cut Cell With PERC Technology



Strengthened Mechanical Support 5400 Pa Snow Load, 2400 Pa Wind Load

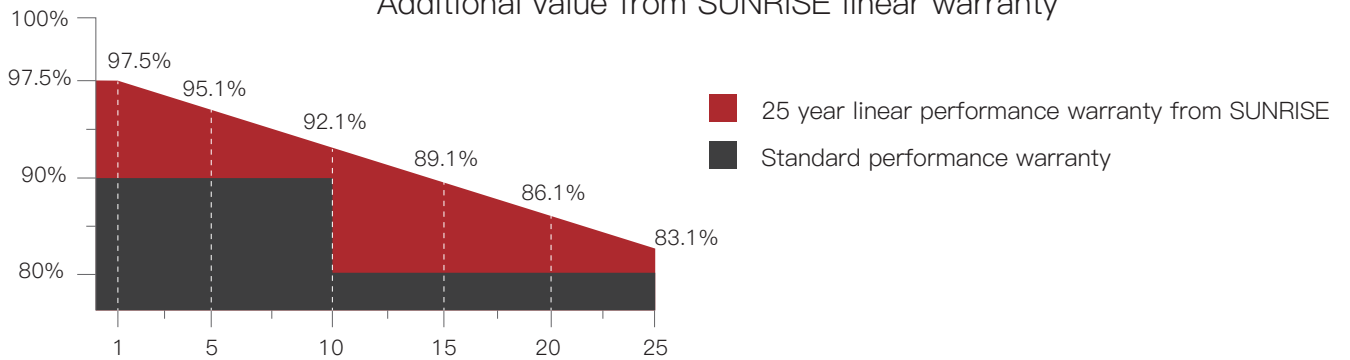


0~3% Positive Tolerance



Higher Power Output

Additional value from SUNRISE linear warranty



SUNRISE ENERGY CO., LTD

TEL:+86-519-81688389

Web:www.sunriseenergy.cn

E-mail:info@sunriseenergy.cn

ADD:No.20 Tongzi River West Road, Zhonglou Development Zone, Changzhou, Jiangsu

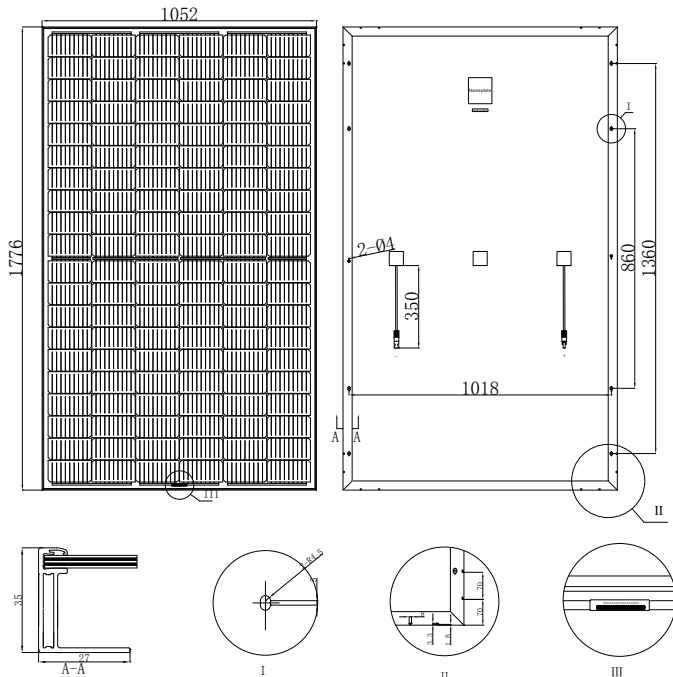


| Module Type | | SR-M660360HLP | | SR-M660365HLP | | SR-M660370HLP | | SR-M660375HLP | |
|-------------------------------------------|---------|--------------------------------------|--------|---------------|--------|---------------|--------|---------------|--------|
| Test Environment | | STC | NOCT | STC | NOCT | STC | NOCT | STC | NOCT |
| Tolerance | (%) | 0~+3 | | 0~+3 | | 0~+3 | | 0~+3 | |
| Module Efficiency | (%) | 19.27 | | 19.54 | | 19.81 | | 20.08 | |
| Maximum Power | Pmax(W) | 360 | 266.59 | 365 | 270.29 | 370 | 273.99 | 375 | 277.69 |
| Open Circuit Voltage | Voc(V) | 40.92 | 38.18 | 41.12 | 38.38 | 41.32 | 38.48 | 41.56 | 38.7 |
| Short Circuit Current | Isc(A) | 11.22 | 9.01 | 11.3 | 9.07 | 11.39 | 9.15 | 11.46 | 9.21 |
| Maximum Power Voltage | Vm(V) | 33.69 | 31.08 | 33.89 | 31.28 | 34.09 | 31.48 | 34.29 | 31.66 |
| Maximum Power Current | Im(A) | 10.69 | 8.55 | 10.78 | 8.62 | 10.86 | 8.69 | 10.94 | 8.75 |
| Cell Type | (mm) | 166x83(9BB Mono-Crystalline Silicon) | | | | | | | |
| Number of Cells | (Pcs) | 120(6x20) | | | | | | | |
| Maximum System Voltage | (V) | DC1500 | | | | | | | |
| Temp. Coeff. of Voc | (%/°C) | -0.285 | | | | | | | |
| Temp. Coeff. of Isc | (%/°C) | 0.055 | | | | | | | |
| Temp. Coeff. of Pm | (%/°C) | -0.365 | | | | | | | |
| Operating Temperature | °C | -40 to 85 | | | | | | | |
| Nominal Operating Cell Temperature (NOCT) | °C | 45±2 | | | | | | | |
| Max. Series Fuse | (A) | 20 | | | | | | | |
| Pressure Bearing | (Pa) | 5400 | | | | | | | |
| Wind Bearing | (Pa) | 2400 | | | | | | | |

STC: Irradiance 1000W/m², Cell temperature 25°C, AM1.5

NOCT: Irradiance 800W/m², Ambient temperature 20°C, Wind speed 1m/s

ENGINEERING DRAWINGS

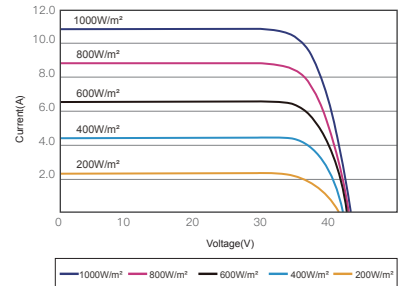


Manufactured in China

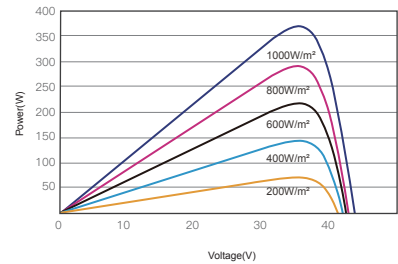
MATERIAL DETAILS

| | |
|-----------------|--------------------------------------------|
| Frame | Anodized aluminum |
| Glass | 3.2mm low-iron tempered suede glass |
| Cell | 6x20pcs 166x83mm mono solar cell |
| Junction Box | Rated Current ≥ 15A, IP ≥ 68, TÜV & UL |
| Diode quantity | 3 |
| Cable&Connector | 4mm ² , EVO2 or EVO2 compatible |
| Cable length | 350mm or as customer's requirements |

IV CURVES



I-V CURVES OF PV MODULE(370W)



P-V CURVES OF PV MODULE(370W)

PACKING DETAILS

| | | |
|------------------|------------|------------------------------------|
| Dimension | (mm) | 1776x1052x35 |
| Weight | (kg) | 20 |
| Loading Capacity | | 360 pcs / 20'GP 858 pcs / 40'HC |
| Packing | pcs/pallet | 31 |